



Human
Development
Report
Office



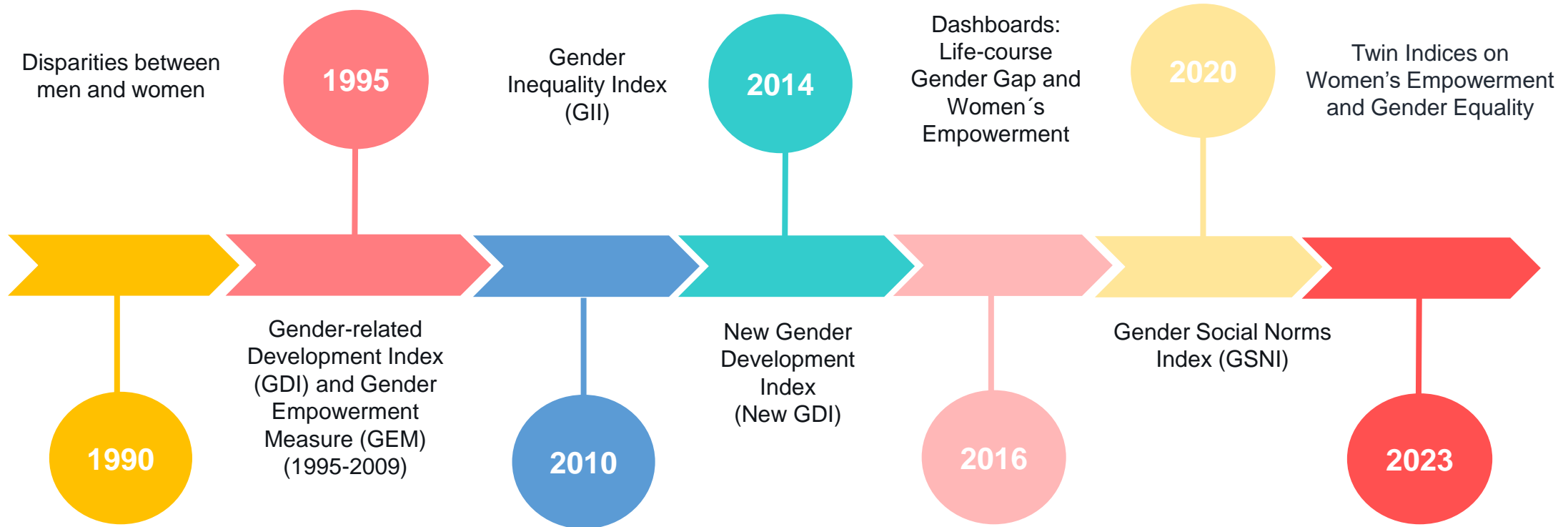
New Gender Indices in Human Development

17th Meeting of the Inter-Agency and Expert Group on Gender Statistics

Yu-Chieh Hsu, Policy Specialist
Human Development Report Office, UNDP

Johannesburg, South Africa
28 August 2023

Measuring Gender Equality in Human Development



Gender Indices in Human Development

**Gender
Inequality Index
(GII)**

**Gender
Development
Index (GDI)**

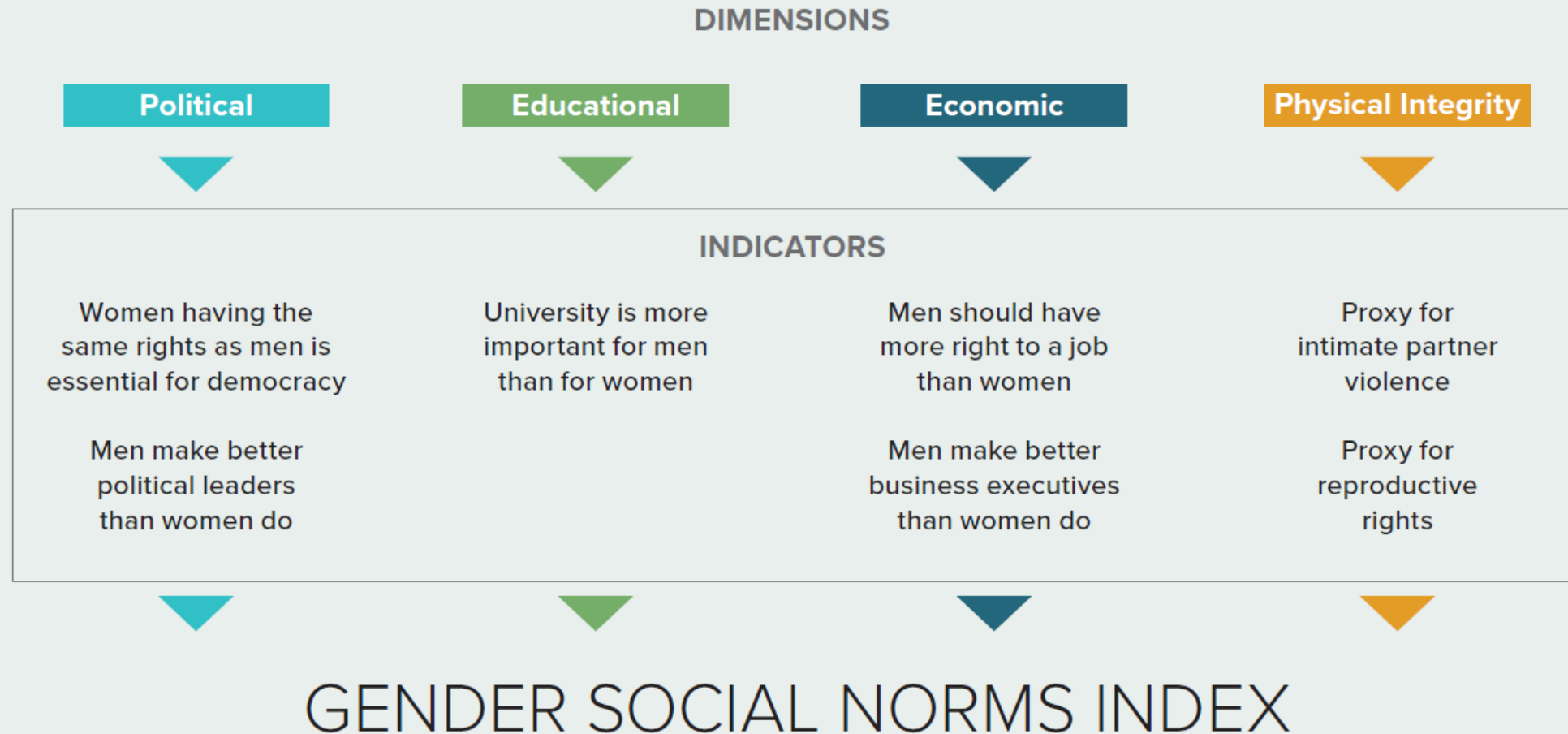
**Gender Social
Norms Index
(GSNI)**

Composite Indices: <https://hdr.undp.org/data-center/composite-indices>

GDI: <https://hdr.undp.org/gender-development-index#/indicies/GDI>

GII: <https://hdr.undp.org/data-center/thematic-composite-indices/gender-inequality-index#/indicies/GII>

The Gender Social Norms Index (GSNI)



Source: Human Development Report Office.

2023 GENDER SOCIAL NORMS
INDEX



Breaking Down Gender Biases

Shifting social norms towards
gender equality



Human
Development
Report
Office



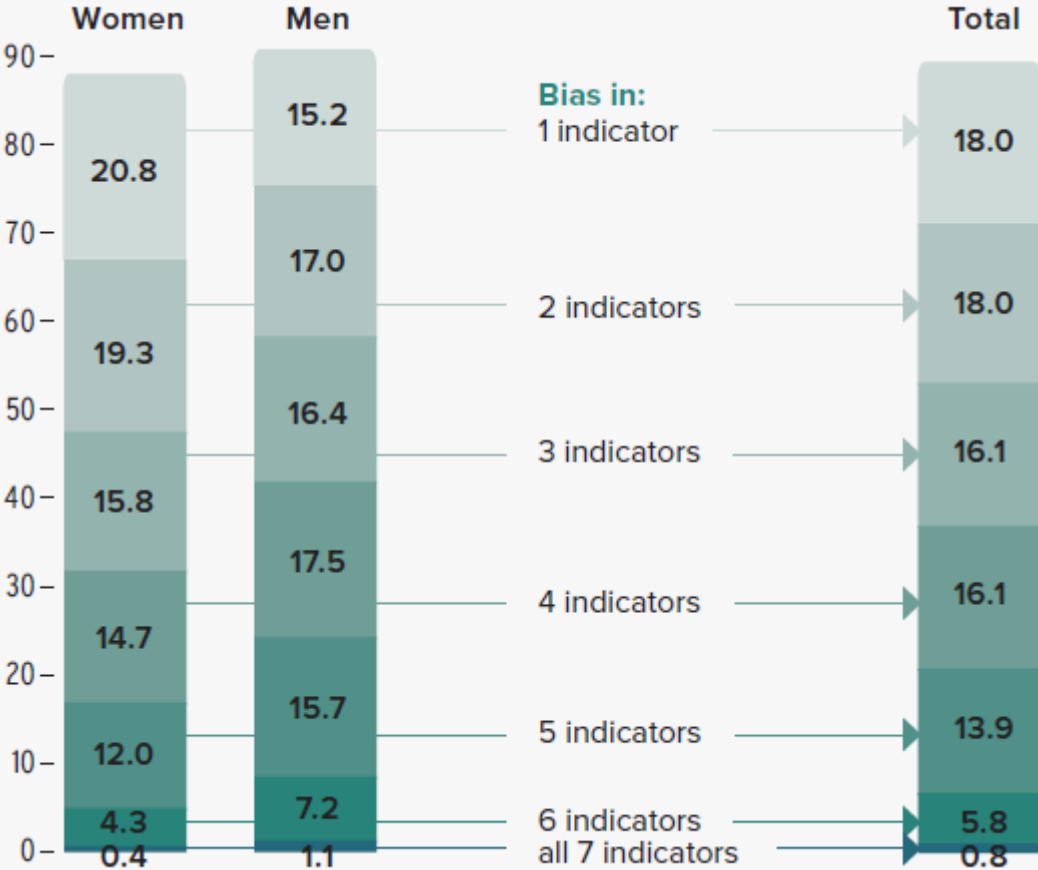
2023 Gender Social Norms Index

Access the report here:

<https://hdr.undp.org/content/2023-gender-social-norms-index-gsni>

A decade of stagnation: The number of people holding bias against women has barely reduced in the last decade

Close to 90% of people have at least one gender social norms bias



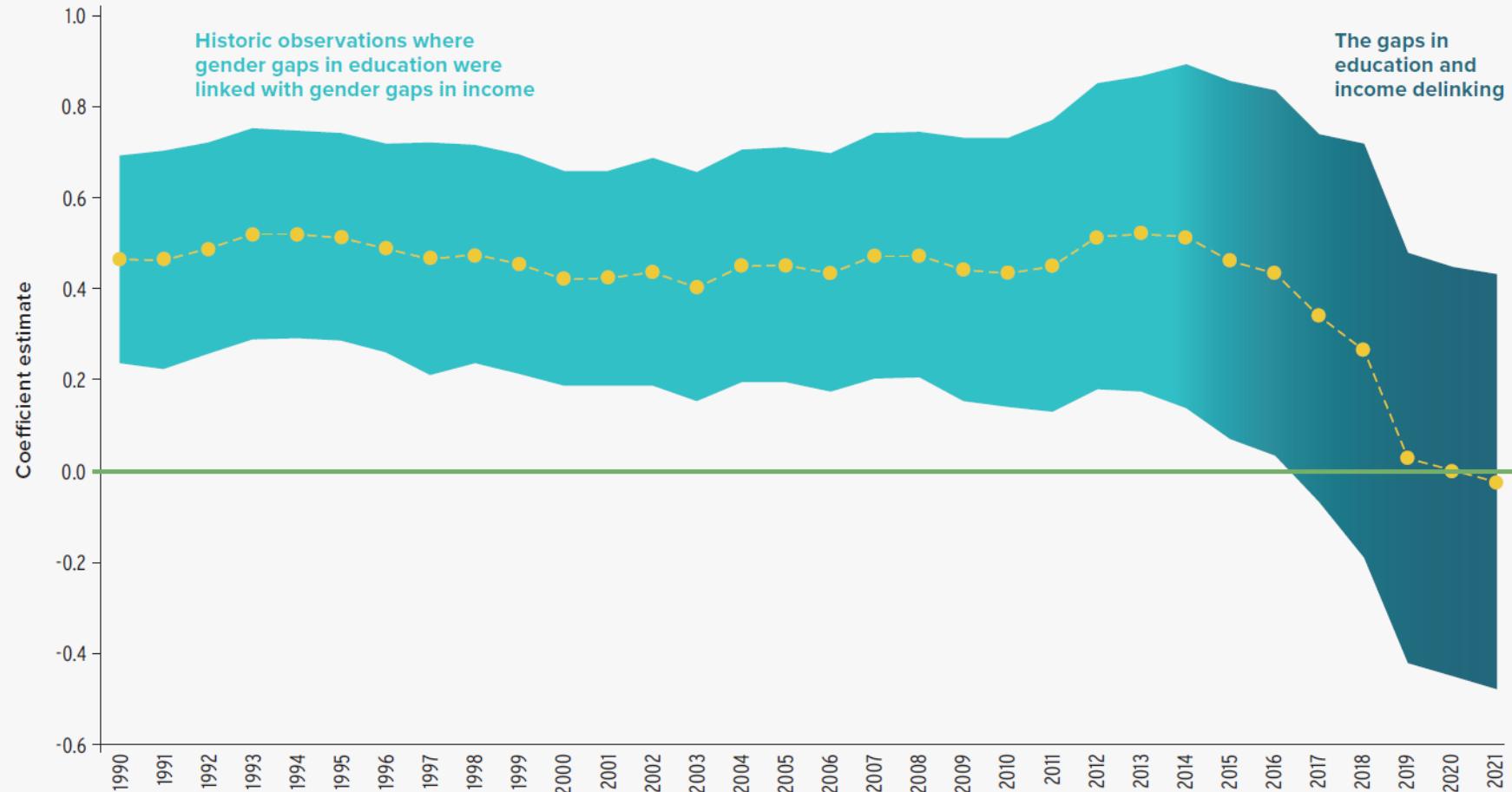
Note: Based on 80 countries and territories with data from wave 6 (2010–2014) or wave 7 (2017–2022) of the World Values Survey, accounting for 85 percent of the global population.
 Source: Human Development Report Office using data from the World Values Survey.

Women and girls face disproportionate hurdles to realizing their potential due to entrenched social norms



Note: Higher values indicate higher proportions of people with biases against women. Based on 80 countries and territories with data from wave 6 (2010–2014) or wave 7 (2017–2022) of the World Values Survey, accounting for 85 percent of the global population. Source: Human Development Report Office using data from the World Values Survey.

Broken links between women's progress in education and their economic empowerment



Note: Each dot shows coefficient estimate in a linear regression model of gender gaps in income on gender gaps in education across countries. The vertical lines above and below the dots represent the 95 percent confidence interval.

Source: Human Development Report Office estimation based on data from table A4.

THE PATHS TO EQUAL

Twin indices on women's empowerment
and gender equality



Human
Development
Report
Office



Two New Experimental Indices on Women's Empowerment and Progress Towards Gender Parity

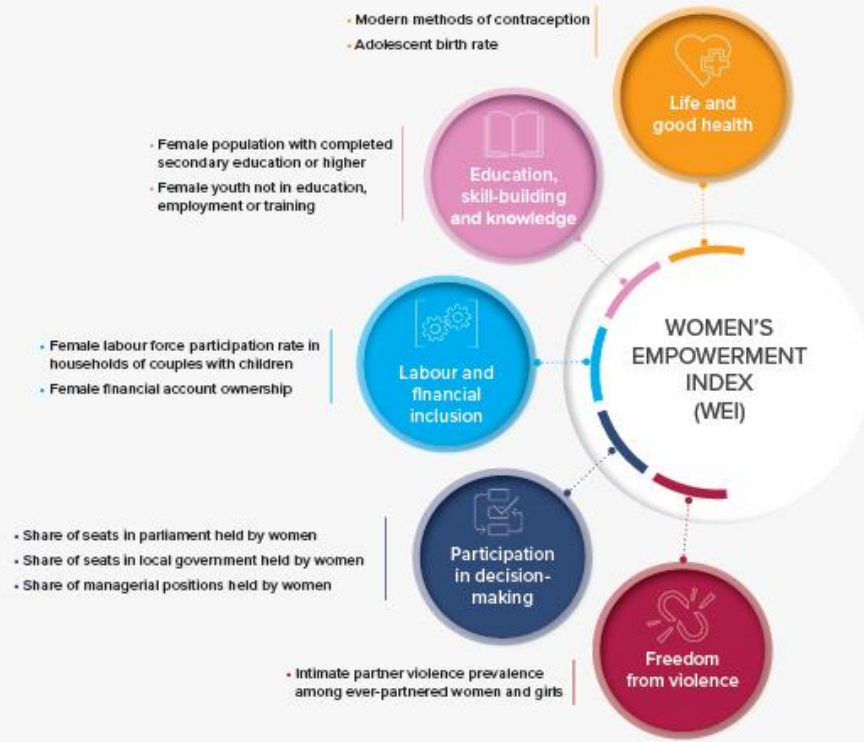
Access the report here:

<https://hdr.undp.org/content/paths-equal>

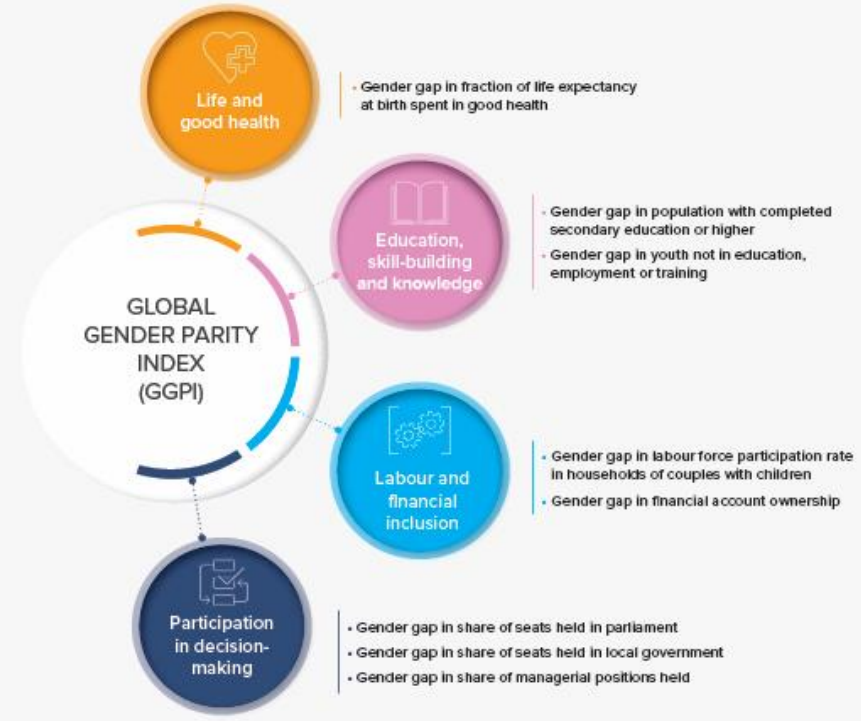
A Twin-Index Measurement Framework

A multidimensional measurement framework aligned with the Sustainable Development Goals (SDGs):
Twin indices measuring **WOMEN'S EMPOWERMENT** and **GENDER EQUALITY**

The WEI evaluates women and girl's achievement in expanding their capabilities across **5 dimensions** to make choices and seize opportunities in life



The GGPI assess the gender gap across **4 dimensions** of human development



8 of the 10 indicators selected are SDG indicators.

72% of indicators are official SDG indicators.

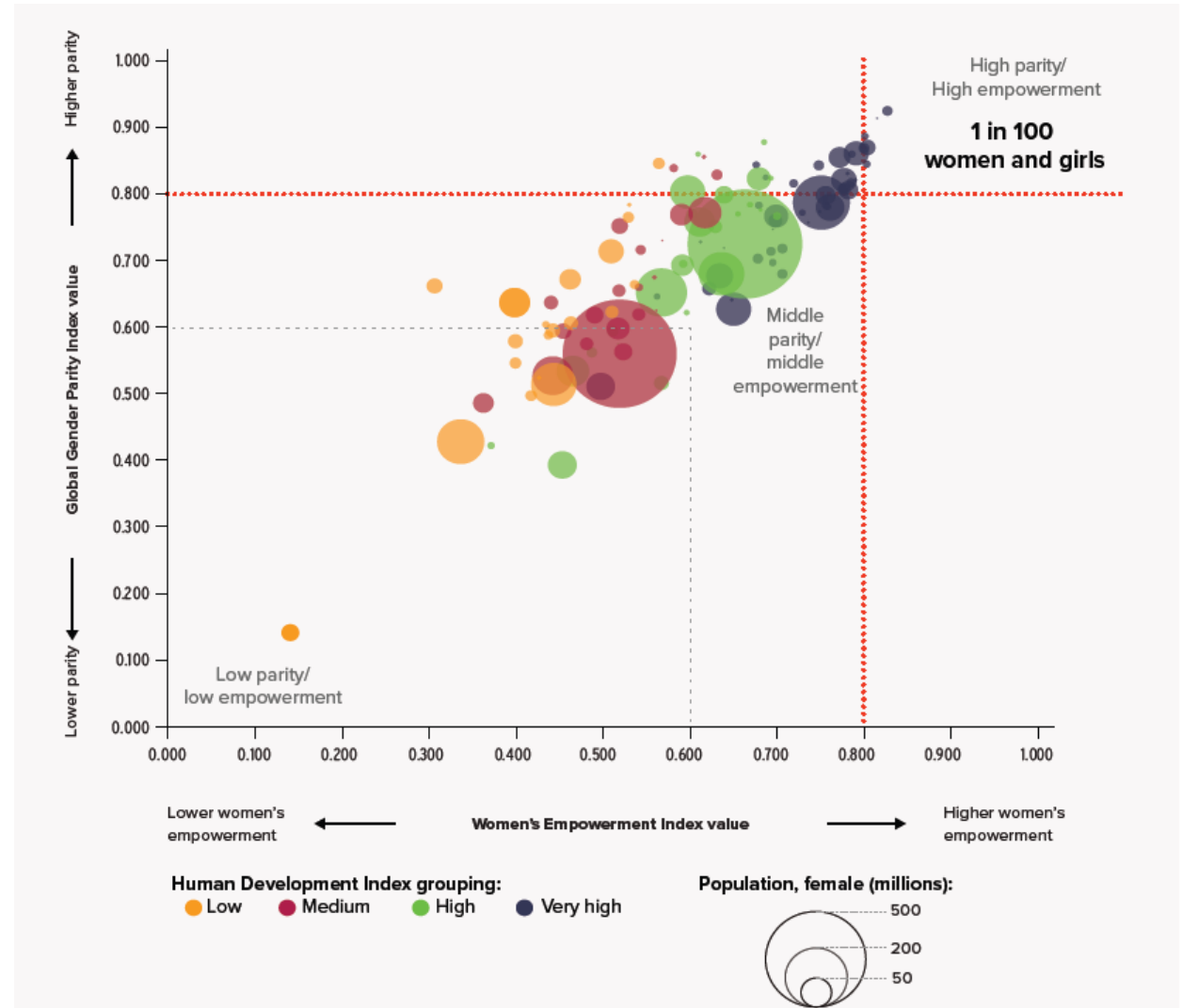
5 of the 8 indicators selected are SDG indicators.

Key Findings

Globally, women are empowered to achieve only **60%** of their full potential.

Globally, women achieve **28%** less than men across key human development dimensions.

Less than 1% of women and girls live in countries with both high women's empowerment and high gender parity



Human Development is not enough

Higher human development does not automatically translate into women's empowerment and gender equality.

47 countries

with low and middle women's empowerment and low and middle gender parity fall in the high or very high human development group.

Complementary nature of twin indices



*WEI and GGPI offer different but **complementary lenses**.*



*In isolation each provides a **partial picture of progress**.*



*Together shed light on **complex challenges** faced by women and pave the way for **targeted interventions and policy reforms**.*

**Human
Development
Report
Office**



Thank you!
yu-chieh.hsu@undp.org

hdr.undp.org